

Inmate Assault, Self-Harm, & Mortality Data FY 2018 as of 7/31/2017

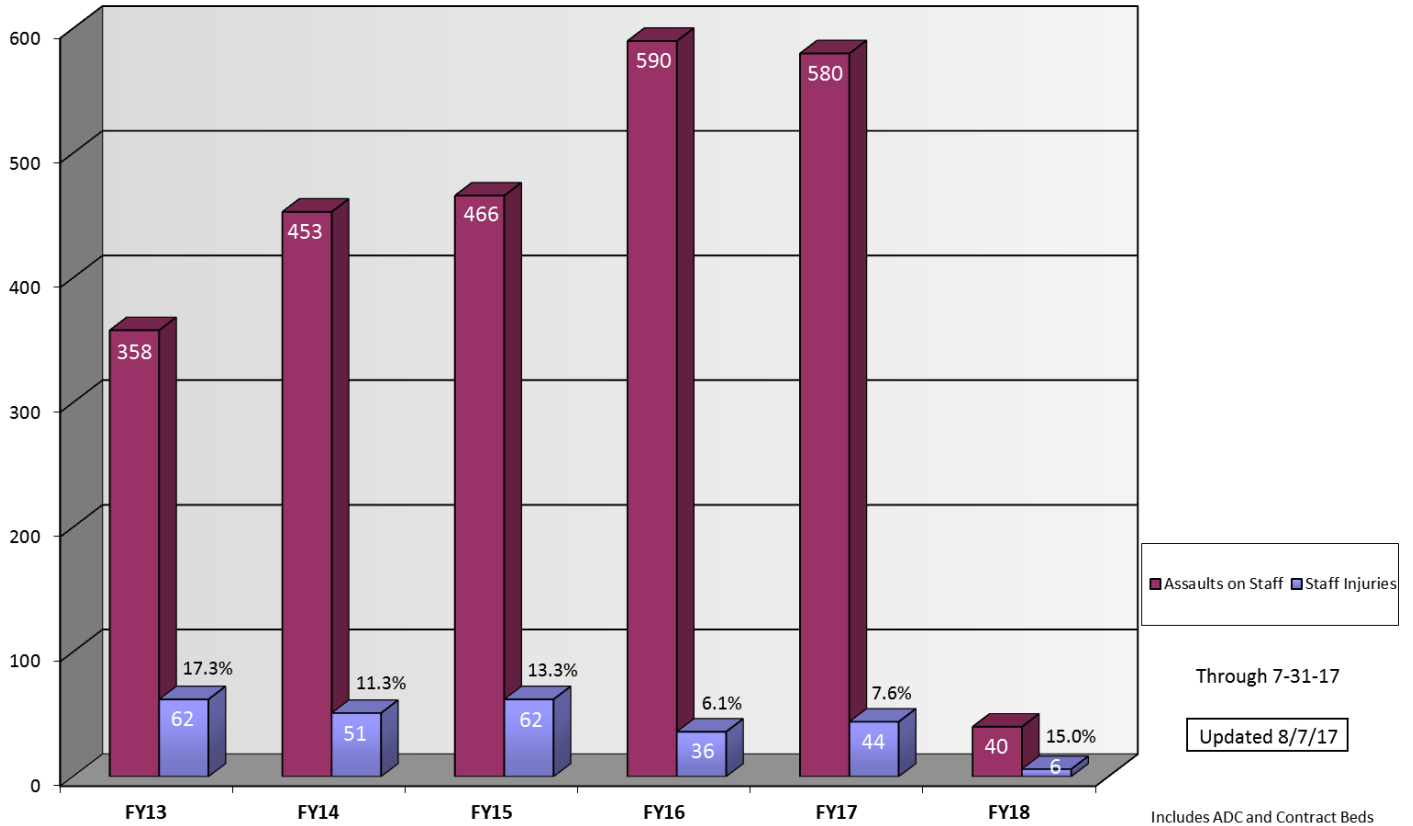
INMATE ASSAULTS ON STAFF

	FY05	FY06	FY07	FY08	FY09	FY10	FY11	FY12	FY13	FY14	FY15	FY16	FY17	FY18*
ADC Staff	149	203	178	231	307	329	362	343	335	412	433	560	545	38
**Contract Beds Staff	11	10	3	19	23	21	20	34	23	41	33	30	35	2
Totals	160	213	181	250	330	350	382	377	358	453	466	590	580	40

*FY 2018 as of 7/31/2017

**Contract Beds represent the lowest custody level (minimum) and two medium security units.

ASSAULTS ON STAFF



**INMATE ON STAFF ASSAULT
CASE SUBMISSION AND DISPOSITION**

FISCAL YEAR	FY12		FY13		FY14		FY15		FY16		FY17		FY18*		TOTAL	TOTAL
Submitted for Prosecution	67		69		73		68		63		66		6		412	PERCENT
Convictions	61	91.0%	53	76.8%	60	82.2%	57	83.8%	38	60.3%	8	12.1%	0	0.0%	277	67.2%
Indicted - Pending Disposition	0	0.0%	0	0.0%	3	4.1%	6	8.8%	12	19.0%	12	18.2%	0	0.0%	33	8.0%
Declined/Dismissed	6	9.0%	16	23.2%	8	11.0%	4	5.9%	7	11.1%	3	4.5%	0	0.0%	44	10.7%
Pending CA Decision	0	0.0%	0	0.0%	2	2.7%	1	1.5%	6	9.5%	43	65.2%	6	100.0%	58	14.1%
TOTAL	67	100.0%	69	100.0%	73	100.0%	68	100.0%	63	100.0%	66	100.0%	6	100.0%	412	100.0%

*FY 2018 as of 7/31/2017

Includes ADC and Contract Beds

CA – County Attorney

Of the 277 convictions since FY 2012, 247 (89.2%) resulted in sentences to be served consecutively; and 23 (8.3%) resulted in sentences to be served concurrently; and 7 (2.5%) convictions not yet sentenced.

**INMATE DISCIPLINARY ACTIONS
RESULTING FROM STAFF ASSAULT**

FY	Disc.	Assaults	Disc. Per Assault
2012	478	377	1.27
2013	428	358	1.20
2014	473	453	1.04
2015	550	466	1.18
2016	661	590	1.12
2017	521	580	0.90
2018*	21	40	0.53
Total	3,132	2,864	1.09

*FY 2018 as of 7/31/2017; does not include cases that are pending
Includes ADC and Contract Beds

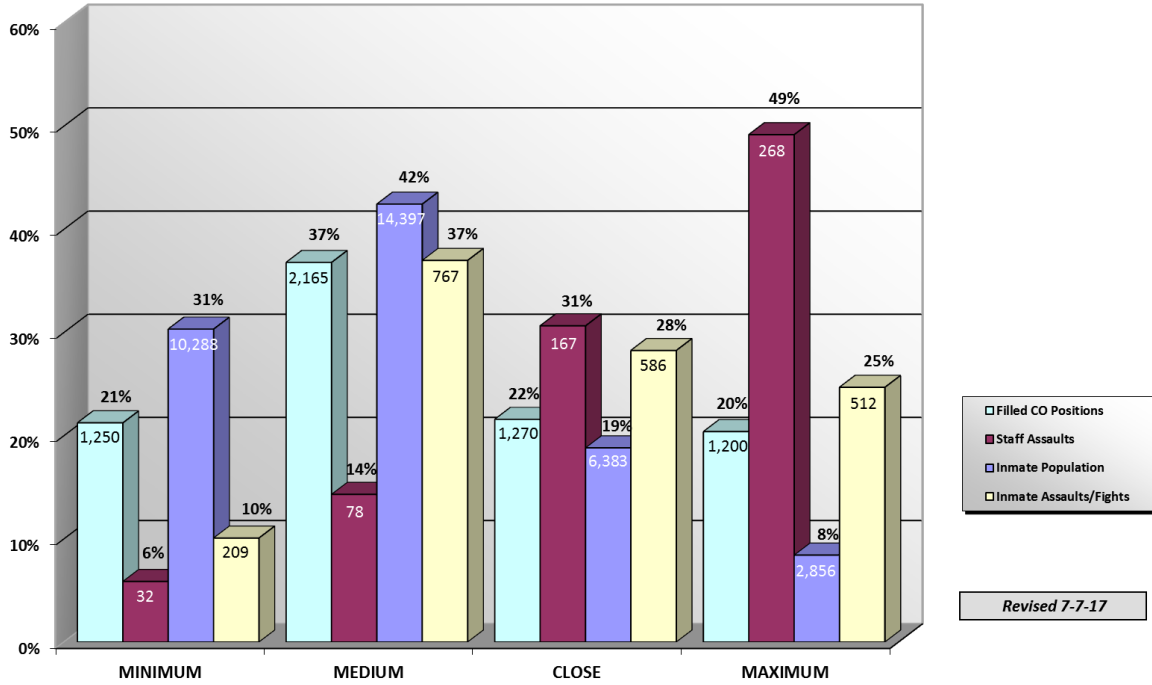
INMATE ON INMATE ASSAULTS AND FIGHTS

	FY09	FY10	FY11	FY12	FY13	FY14	FY15	FY16	FY17	FY18*
ADC	778	1,335	1,478	1,510	1,623	1,837	2,019	2,229	2,074	205
**Contract Beds	64	79	75	159	135	161	171	151	199	18
Totals	842	1,414	1,553	1,669	1,758	1,998	2,190	2,380	2,273	223

*FY 2018 as of 7/31/2017

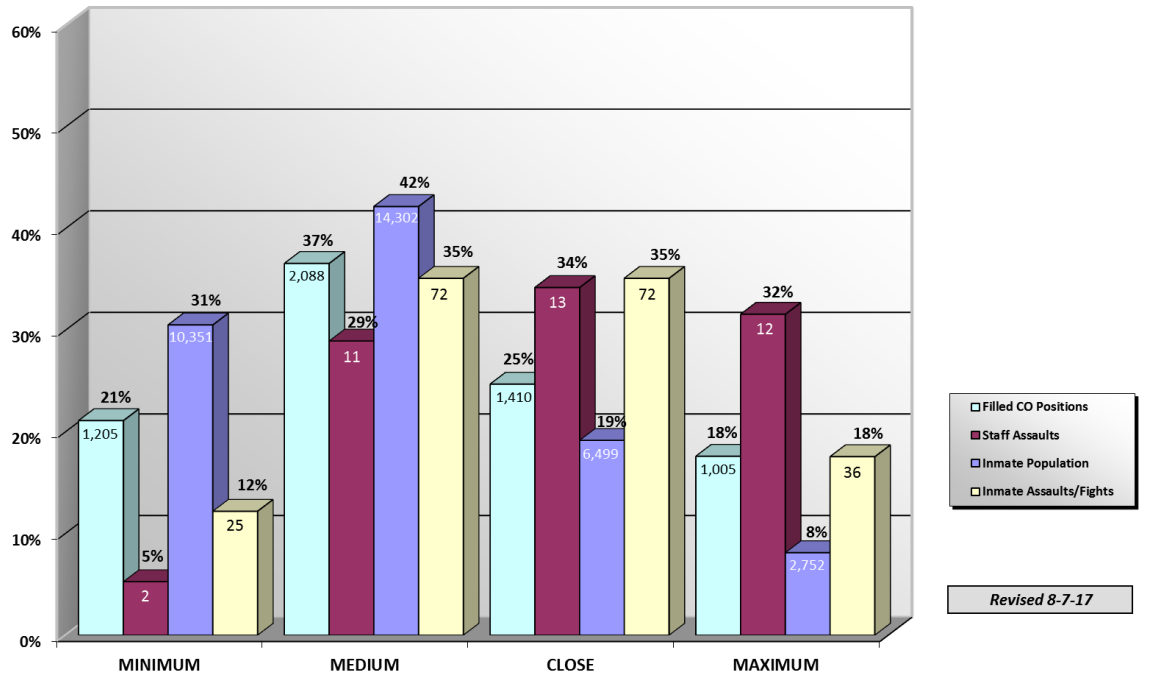
**Contract Beds represent the lowest custody level (minimum) and two medium security units.

Population and Assault-Fight Comparison
FY 2017



“Filled CO Positions” refers to ADC staff only; this graph excludes Contract Beds.

Population and Assault-Fight Comparison
FY 2018
(Through 7-31-17)



“Filled CO Positions” refers to ADC staff only; this graph excludes Contract Beds.

**INMATE SELF-HARM ATTEMPTS
BY YEAR AND TYPE**

FY	CUTTING	OVERDOSE	BLUNT FORCE	HANGING	FIRES	TOTALS
2014	134	121	70	48	6	379
2015	197	146	93	50	13	499
2016	193	101	89	57	12	452
2017	287	138	246	80	12	763
2018*	22	25	15	5	0	67
TOTALS:	833	531	513	240	43	2,160

*FY 2018 as of 7/31/2017

Includes ADC and Contract Beds

Cutting: Scratches, lacerations, biting

Overdose: Medication, drugs, ingested objects

Blunt Force: Banging head, object insertion, striking self

**INMATE DEATHS
BY YEAR AND CAUSE**

TYPE	FY 08	FY 09	FY 10	FY 11	FY 12	FY 13	FY 14	FY 15	FY 16	FY 17	FY 18*	Total
Natural Causes	87	79	67	64	71	66	91	82	102	109	3	821
Suicide	5	6	10	13	6	7	8	6	6	8	0	75
Accidental	7	4	4	5	7	7	3	6	11	14	1	69
Homicide	1	4	5	4	3	3	3	5	6	5	0	39
TOTAL	100	93	86	86	87	83	105	99	125	136	4	1,004
ADP	37,910	39,626	40,458	40,226	40,011	40,048	41,084	42,132	42,902	42,200	42,184**	

*FY 2018 as of 7/31/2017

** Actual inmate population as of 7/31/2017

Includes ADC and Contract Beds

ADP – Average Daily Population (for Fiscal Year)

Cause of death figures are subject to change based on official medical examiner reports, which may be issued in a subsequent month.